

**Vancore**

*Worldwide Percussion*

# Product Information

## SNARE DRUMS



| Caribbean Band Series |



## CARIBBEAN BAND SERIES VORTEX DRUM

The UFI series are build as a freefolating concept. The unique construction where the drumhead is tensioned between the alluminum collar and the tensionring. Both components are precizely CC machined and stand for an extra ordinary strong construction.

The only tension limit is the strength of your drumhead. The drums are completed with an attachable special sized cut of shell for an optimum of protection and a sound wich is as strong as the power of a Vortex. The drums can be used with our without shell.

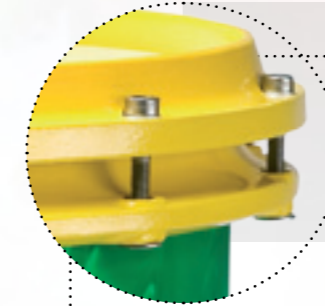
UFI SERIES VORTEX DRUMS | STRONG AND POWERFUL AS THE TROPICAL VORTEX STANDS FOR!!



### DRUMHEADS

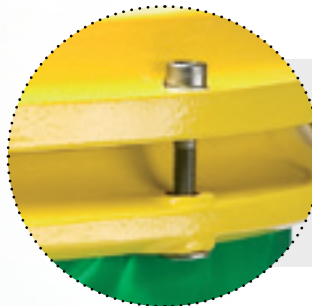
We only use the best component and there fore these series we choosed for Remo Falam Series High Tension Drumhead. Standard mounted on the instrument.

“THE BEST DRUMS NEED ONLY THE BEST AVAILABLE DRUMHEADS”



### TENSIONRINGS

Made out of special aluminium alloy. Focused on strength and durability. Precisely CC machined, mirror finished and available in different finishes. Just the best quality available on the entire market.



### TENSION RODS

The drums are fitted with 12 stainless steel tension rods (M6X 1,5) for durability and strength to stand the high tension suitable for these drums, creating the sound / tension you need.



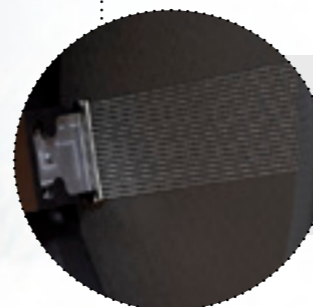
### COLLAR

Made out of special aluminium alloy. Focused on strength and durability. Precisely CC machined to create just the best construction for both bearing edge and extreme high tension. The collar just stand for quality and a life time durability. To adapt the drum to a carrier we choose the collar to attached the adaptor for a strong connection between carrier an drum.



### LUGS

Pressed into the collar the 12 steel inserts guarantee a lifetime functioning. Made for extreme tension ad precize tuning.



### SNARES

Using wire snares – (20 strands) the available snare systems stand for the most crispy and accurate sound available.



### TOP STRAINER

**Fixed Top Strainer - FS** | If you want to play only with snares just remember this: Less is better for both weight and functioning.

Due the precize machining of collar and snarestrainer we are able to fit a fixed snarestrainer. Only using high quality CC machined components. Easy to handle and adjust.

**Switching Top Strainer - TS** | For using the drum with our without snares we created the most sofisticated top strainer. Easy to handle and fully adjustable, both height and snare tensioning. With CC machined components like Delrin and special high quality anodized aluminum the strainer are the absolute top level available.



### SHELL MOUNTING SYSTEM

The UFI Vortex High Tension Snaredrums can be played with or without shells. The shells can be easily attached to the collar.



| Vortex Drums | ‘Drums to dance!’.....



## SHELLS



**Plywood Impact** | A 4mm 6-ply wooden shell made out of a combination of beech and occume. Both wood species which are the basics of light and strong drums shell.

PLYWOOD IMPACT | THE HEARTBEAT OF YOUR DRUM!!

**Aluforce** | Precisely CC bended and welded aluminium shells made out of a special 1.5 mm aluminium sheet material. Extremely light in weight with an excellent performance in sound and durability.

ALUFORCE IT JUST SAYS WHERE IT STANDS FOR!!  
LIGHT IN WEIGHT AND STRONG IN SOUND!!



## COLOR OPTIONS

“Various Shell and Hardware colour finishes available, please ask for colour charts!”



## FEATURES AND MODELS



Art. nr.	Size	Shell	Tensionrings	Collar	Strainer	Snares	Tension Rods	Drumheads	Weight
UFI1200TS	12"	Plywood Impact	CC Machined High Grade Aluminum	CC Machined High Grade Aluminum	TS	Wire	10	Remo Falam Series	3,6 kg 7,8 lbs
UFI1300TS	13"	Plywood Impact	CC Machined High Grade Aluminum	CC Machined High Grade Aluminum	TS	Wire	12	Remo Falam Series	3,9 kg 8,6 lbs
UFI1400TS	14"	Plywood Impact	CC Machined High Grade Aluminum	CC Machined High Grade Aluminum	TS	Wire	12	Remo Falam Series	4,2 kg 9,4 lbs
UFI1200FS	12"	Plywood Impact	CC Machined High Grade Aluminum	CC Machined High Grade Aluminum	FS	Wire	10	Remo Falam Series	3,0 kg 6,3 lbs
UFI1300FS	13"	Plywood Impact	CC Machined High Grade Aluminum	CC Machined High Grade Aluminum	FS	Wire	12	Remo Falam Series	3,3 kg 7,3 lbs
UFI1400FS	14"	Plywood Impact	CC Machined High Grade Aluminum	CC Machined High Grade Aluminum	FS	Wire	12	Remo Falam Series	3,6 kg 7,9 lbs



Art. nr.	Size	Shell	Tensionrings	Collar	Strainer	Snares	Tension Rods	Drumheads	Weight
AFI1200TS	12"	Aluforce	CC Machined High Grade Aluminum	CC Machined High Grade Aluminum	TS	Wire	10	Remo Falam Series	3,5 kg 7,7 lbs
AFI1300TS	13"	Aluforce	CC Machined High Grade Aluminum	CC Machined High Grade Aluminum	TS	Wire	12	Remo Falam Series	3,8 kg 8,3 lbs
AFI1400TS	14"	Aluforce	CC Machined High Grade Aluminum	CC Machined High Grade Aluminum	TS	Wire	12	Remo Falam Series	4,1 kg 9,0 lbs
AFI1200FS	12"	Aluforce	CC Machined High Grade Aluminum	CC Machined High Grade Aluminum	FS	Wire	10	Remo Falam Series	2,9 kg 6,3 lbs
AFI1300FS	13"	Aluforce	CC Machined High Grade Aluminum	CC Machined High Grade Aluminum	FS	Wire	12	Remo Falam Series	3,2 kg 7,0 lbs
AFI1400FS	14"	Aluforce	CC Machined High Grade Aluminum	CC Machined High Grade Aluminum	FS	Wire	12	Remo Falam Series	3,5 kg 7,7 lbs



**Vancore Nederland b.v.**

Tolhuswei 7a - 9

8501 ZP JOURE - The Netherlands

Tel: +31 513 415127

Fax: +31 513 413038

Email: [info@vancore.nl](mailto:info@vancore.nl)

**WWW.VANCORE.COM**